

Vlaams

Architectuur

instituut

**Flanders Architectural Review N°16
PRESS TOUR**

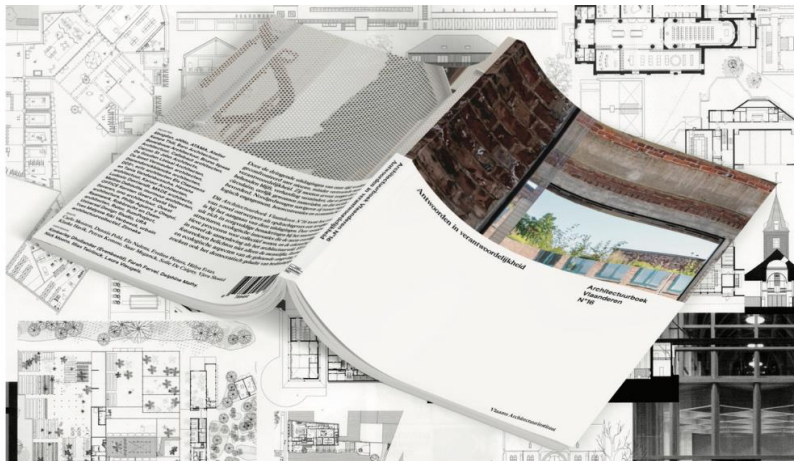
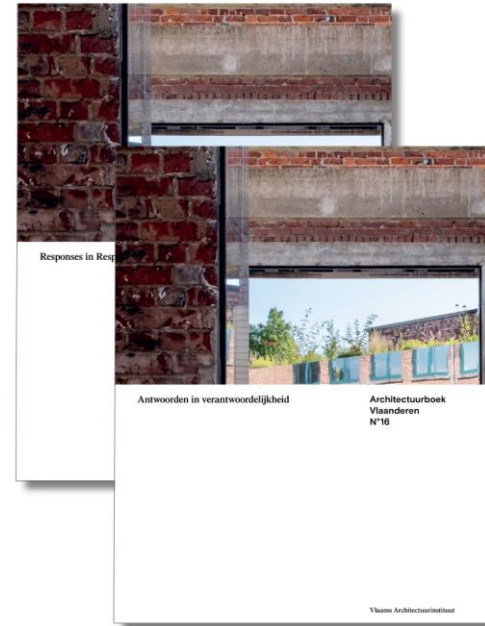
Antwerp, Ghent, Kortrijk

19.11.2024 – 20.11.2024



Flanders Architectural Review N°16

In light of today's societal and environmental challenges, it is clear that architecture is no longer just an aesthetic or functional discipline, but increasingly plays a role in shaping a more sustainable, more inclusive future. The latest Flanders Architectural Review, comprising 22 inspiring projects, 11 critical essays and 6 photo series, shows that caring, responsibility and collaboration are the core values of contemporary architecture.



Responses in Responsibility

The publication was preceded by a call for projects. The editors explicitly sought out projects that not only meet regulations and economic constraints, but also proactively tackle ecological challenges, such as reducing construction waste and supporting biodiversity. From the more than 300 submissions, some 100 projects were selected which the editorial team visited on-site and carefully assessed. From these, the editorial board then chose 22 projects that provide 'responses in responsibility'; they are complemented by projects that appear in the 11 essays.

DAY 1 | 19.11.2024

Antwerp

09:30

Welcome with coffee and pastries
DE SINGEL, (Desguinlei 25, Antwerp)



10:00

Guided tour in exhibition **Dogma: Urban Villa** with
Hülya Ertas (Head of Exhibitions VAI)
Dennis Pohl (Director VAI)

12:00

Transfer by bus to Ghent



Dogma: Urban Villa

Ghent

13:00

Lunch (404)

14:30

Guided tour in **Wintercircus**

16:00

Guided tour in Cohousing **Bijgaardehof**

17:00

Guided tour in **Hartentroof**

18:00

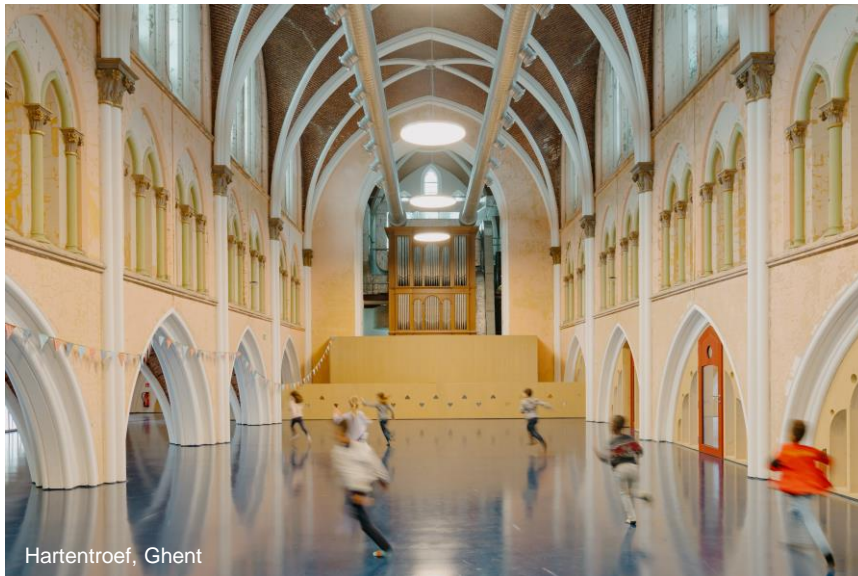
Transfer by bus to Kortrijk

19:00

Check in Hotel Damier

20:00

Dinner at Spicy Lemon



Hartentroof, Ghent

DAY 2 | 20.11.2024

Kortrijk area

08:00

Breakfast and check-out

09:00

Guided tour in **Deelfabriek**

10:15

Guided tour in **Sint Corneliuskerk**

12:00

Guided tour in **ABBY**

13:30

Lunch in Damier

15:30

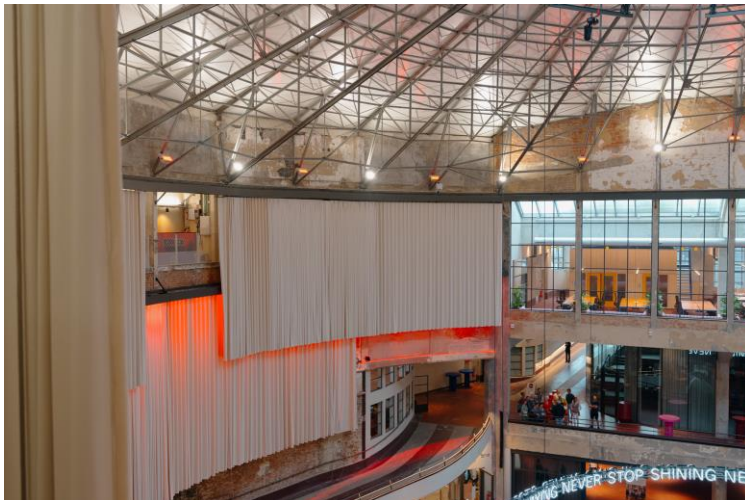
End



Deelfabriek, Kortrijk

PROJECT 1 | Wintercircus

SOGent launched an architectural competition to redevelop the Winter Circus and adapt it to the needs of the future concession holder. The latter aspired to turn it into an urban hub with a café and a restaurant, spaces for innovative or emerging companies, and a large events hall. The team made up of Atelier Kempe Thill and aNNo won the competition with a proposal that focused on preserving the large open central hall and the building's rough and weathered character.



All the building phases of the Winter Circus have left traces. Nevertheless, this huge urban palimpsest is remarkably coherent. The earthen-red factory floors of the former Mahy garage and the weathered plaster on the walls contribute to this overall impression. The designers gave the new concrete floor of the central hall the same colour. When Baro, SUMProject and VK Engineering took over in the final phase of the conversion, they added skirting boards, stairs and benches around the central arena in the same colour again, refining the approach of Atelier Kempe Thill and aNNo.

Architects: Atelier Kempe Thill together with aNNo and Baro together with SUMProject

PROJECT 2 | Cohousing Bijgaardehof

The Bijgaardehof is a rather large housing complex of fifty-nine units newly built within the industrial railroad area of Gent-Dampoort, which separates the city centre from the Sint-Amandsberg neighbourhood to the east. Given its location and size, the Bijgaardehof is the most visible sign of the renewed interest in this area, which is undergoing a process of renovation and conversion with initiatives both public and private, big and small. The project stems from a district health centre and three co-housing collectives that joined and won a public bid to purchase the land and develop the project with a single architectural office, &bogdan. Public authorities (Sogent and the municipality) were also stakeholders and financed the public areas. The three buildings form a coherent ensemble but present different spatial layouts, responding to the specific demands of each co-housing group and its members.

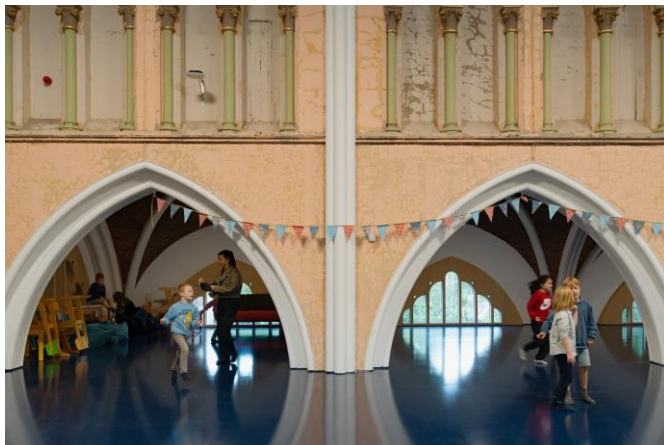


An articulated communal area rests amid these buildings; it includes gardens, a playground and a co-working space. Other facilities extend the individual dwellings into different forms of sharing. Overall, large balconies, rooftops and external circulations animate the estate above the ground-floor level. Between the estate and the park, both connecting and keeping them apart, the vestiges of existing brick sheds have been treated as 'assisted ruins', with street art, plantations and new paths, functioning as outside rooms to play in. As residents wait for the new trees to grow into a lush garden, they constitute the anchor and memory of the place.

Architects: &bogdan

PROJECT 3 | Hartentroef

The repurposing of the Sacred Heart Church in the Ghent municipality of Sint-Amandsberg is part of the city's En Route strategy to revitalize less affluent neighbourhoods and improve public space. Centrally located in the district, the Sacred Heart Church offered opportunities to establish connections with the area and accommodate various social programmes. After a competition, the assignment was awarded to De Smet Vermeulen architecten, who set themselves the goal of renovating the church in such a way that it would literally and figuratively generate connections: by activating the sides of the church and by creating spaces for different initiatives. Both sides of the church now form a new entrance: one leading to a car-free urban square with room for a market and other activities; and one to the garden, which is connected to the presbytery and the school located at the back. The covered gallery means that the church is a place where people can spend time even outside opening hours.



In the church itself, an extra floor has been inserted in the nave. The ground floor houses a community room and restaurant, while a multipurpose room is to be found on the floor above. The chapel has been left intact so that church services can still be held. In terms of materials, wooden built-in components were chosen for the floors and ceilings, and glass for the partitions, allowing for visibility between the different spaces. The presbytery was also included in the project: among other things, it received a new entrance on the garden side.

Architects: De Smet Vermeulen architecten

PROJECT 4 | Deelfabriek

The former fire station in Kortrijk is a beacon in the city. The building is a model of modernist architecture. A low, rounded wing embraces the street corner and contrasts with the tower volume and stairwell, which mark the corner as an elegant, vertical element. The long horizontal windows stand out in the dark brick façades. The station was built in 1940 and listed as a monument in 2004.

The building has been repurposed as a meeting place where city, civic and neighbourhood initiatives meet in a 'Deelfabriek'. This 'sharing factory' was an existing city project, launched in 2017, that brought together various citizen initiatives while providing support to vulnerable families. The urban project is a model of the sharing economy. Soon after it was founded, however, the organization was already bursting at the seams and a move to the redeveloped fire station was prepared.



The large front hall is used as a central entrance and houses a people's restaurant. Neighbourhood activities also take place here. The hall gives access to a new courtyard, which opens up the former stands of the fire engines. Some of those stands have been dismantled and transformed into outdoor rooms, bright and airy. The stands on the long wall of the courtyard have been converted into retail spaces for volunteer initiatives, each with its own entrance to the courtyard under a newly constructed gallery.

Architects: ATAMA

PROJECT 5 | Church of St Cornelius and Community Centre Aalbeke

In the village of Aalbeke, a stone's throw from the city of Kortrijk, public functions and buildings have been rearranged in recent years according to a plan designed by urbain architectencollectief. The same firm had previously drawn up the study assignment 'Kerkenplan Kortrijk', a plan for the churches of Kortrijk. With this context in mind, the Church of St Cornelius, together with a community centre from the 1980s, formed the basis for a compact organization of public services, local associations and sparsely attended church services. Other public buildings, such as the old town hall, were sold off. In the church, the designers reduced the space for services to a modest chapel in the former choir. The rest of the nave served as a joker in terms of floor plan and use of space. It made possible the connection between the chapel and the aisles, which are now home to classrooms for the music academy and a small village library.

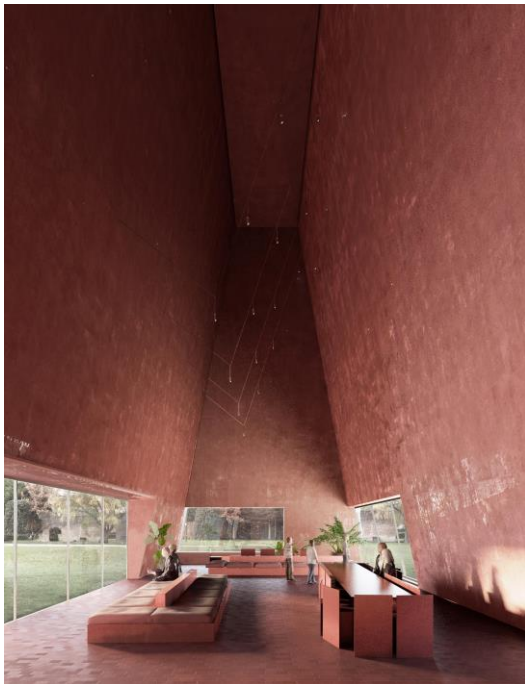


On the side of the village centre, a new extension, which replaces a number of terraced houses, gives the community centre a new appearance on Aalbekeplaats. The new construction embraced the scale and architectural language of the village, while concealing the imposing shell of the hall behind it. It also marks out a modest forecourt, which acts as a hinge between the village square, the foyer and the cafeteria of the existing building.

Architects: urbain architectencollectief

PROJECT 6 | ABBY

Abby Kortrijk is a planned art museum and exhibition venue opening in Kortrijk (Courtrai) in the spring of 2025. Situated in the city of Kortrijk, the project transforms and extends the historically valuable ensemble into a new art and exhibition space for temporary exhibitions and public activities. The new building comes as a clearly recognizable element in dialogue with the existing architecture. A new park pavilion that, with his monumental and elegant appearance, functions as a magnet for residents and visitors.



The project aims to formulate a strong answer to reach a clear organization of the program and a recognizable and open identity. For this reason, the building ensemble hosts a series of public programs besides the two underground state-of-the-art exhibition rooms that provide around 600 m² of extra exhibition space. With few precise gestures the project points to transform the Groeninge Abbey into an attractive Art and Exhibition Space in the heart of Kortrijk, a dynamic place for openness, dialogue, and connection.

Architects: Barozzi Veiga together with Tab Architects

Who's on board?

Flanders Architecture Institute
Dennis Pohl, Egon Verleye, Barbara De Coninck

The Architectural Review, London (UK)
Eleanor Beaumont

CUBE, Düsseldorf (D)
Paul Andreas

Volume, Amsterdam (NL)
Stephan Petermann

Bauwelt, Berlin (D)
Kaye Geipel

AW Architektur & Wohnen, Berlin (D)
Jeanette Kunsmann

Werk, Bauen + Wohnen, Zurich (CH)
Ronald Züger

Calimero, Stockholm (S)
Leo Gullbring

BauNetz, berlin (D)
Tim Gebhardt

KoozArch, Milan (IT)
Niels Baeck

Witte Raaf (BE)
Christoph Van Gerrewey

Accattone (BE)
Carlo Menon

NAV News (BE)
Arnaud Tandt



Contact & Info

Barbara De Coninck
Publications

T +32 (0)3 242 89 70
M +32 (0)475 31 42 76
barbara.deconinck@vai.be

Egon Verleye
Communications & PR

T +32 (0)3 242 89 72
M +32 (0)486 21 17 74
egon.verleye@vai.be

Organized by

Flanders Architecture Institute

With the additional support of

sogent



Vlaams

Architectuur

instituut

Vlaams

Architectuur

instituut

vai.be

@vlaams_architectuurinstituut | #vlaamsarchitectuurinstituut