

Flanders Architecture Institute

CARING ARCHITECTURE

double expo:

CARE FOR SPACE FOR CARE: Scenes from Flanders and Brussels

CRITICAL CARE. Architecture for a Broken Planet

28.05.2022 - 11.09.2022

Caring Architecture

In this space, you can see two exhibitions coming together. *Critical Care: Architecture for a Broken Planet* (an exhibition by Architekturzentrum Wien) is laid out across the walls and *Care for Space for Care: Scenes from Flanders and Brussels* is positioned in the rooms at the centre of the exhibitionhall. *Critical Care* offers a framework to understand the role of care in architecture with examples from around the world, while *Care for Space for Care* provides insight into the local context with clues about the spatial experience of nine projects.

Care for Space for Care explores how care and architecture can nurture each other. The spaces we live in can care for us and our planet, while we also take care of them. With this continuous loop, caring can become one of the inherent characteristics of architectural design.

The exhibition is structured around three themes: Interdependence, Maintenance and Posthumanism. Projects under the theme of Interdependence explore how architecture can care for people and facilitate empathy through design. As opposed to the dualistic understanding of giving and receiving care, interdependence proposes a network of caring relationships. In this relational network, architecture plays a role in both defining the daily habits of people and in making visible the social challenges of today.

Maintenance is about caring for architecture the built environment, and also for the material and energy resources that make architecture real. A maintenance perspective considers the existing building stock as a crucial resource to be benefitted from and aims to extend the lifespan of buildings as long as possible. One can maintain a building but also a city, by being considerate of the collective urban memory.

Caring for the planet is conceptualised as Posthumanism, and it recognises the relationships between humans, non-human animals, plants, technological infrastructure and the digital world. It offers a new approach to architectural design that is no more human-centric but takes into account all other actors in the planetary network and how they are interconnected.

EXHIBITION

Caring Architecture

Care for Space for Care is a reading of the current architecture in Flanders and Brussels from a care perspective but also at the same time it is a plea for change to make caring inherent characteristics of our practices, either professionally or daily.

There is a reflection space at the back of the hall, curated in collaboration with the research group Newrope from ETH Zurich. We hope you can enjoy a cup of coffee, take your time to reflect upon the exhibition and share your ideas with us.

Care for Space for Care: Scenes from Flanders and Brussels

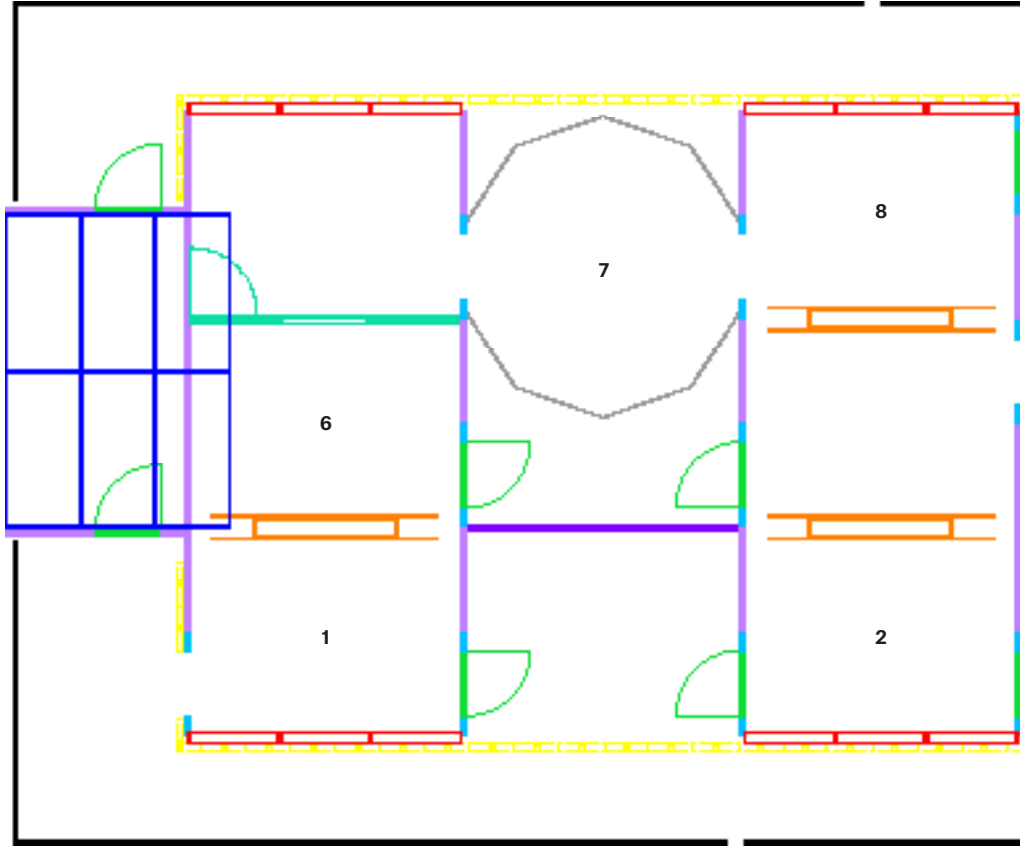
Interdependence	page
NU architectuuratelier - Huis Perrekes	10
import.export Architecture - Sporthaven and Ziggy	12
Seasonal Neighbours Collective - House for Seasonal Neighbours	14
Maintenance	
Laura Muyldermans & LDSRa - Actiris	16
Francesca Torzo architetto - Z33	18
OUEST - Le Rideau	20
Post-Humanism	
Bureau Bas Smets - Grand Hôpital de Charleroi	22
noAarchitecten - Ecotron	24
De Gouden Liniaal Architecten - Negenoord Observation Tower	26
Newrope	28

Critical Care. Architecture for a Broken Planet

Care for Water and Land	page
Recovery of the Irrigation System at the Thermal Orchards Caño Martín	32
Peña Community Land Trust	33
Friendship Centre	34
Unidad de Vida Articulada Orfelinato, Uva de La Imaginación	35
MEXUS	36
Care for Repair	
Transformation of 530 Dwellings, Cité du Grand Parc	37
Haus der Statistik	38
SESC 24 de Maio	39
PC Caritas	40
Care for Skills	
Sindh Flood Rehabilitation	41
100 Classrooms for Refugee Children	42
Volontariat Home for Homeless Children	43
Jintai Village Reconstruction	44
Care for Public Space	
Ruskin Square	45
Superblock Model	46
Freie Mitte Nordbahnhof	47
Care+Repair	48
Care for Production	
R-Urban	49
Kibera Public Space Project	50
Didi Textiles	51
Tofu Factory	52

Map

Care for Water and Land



Care for Production

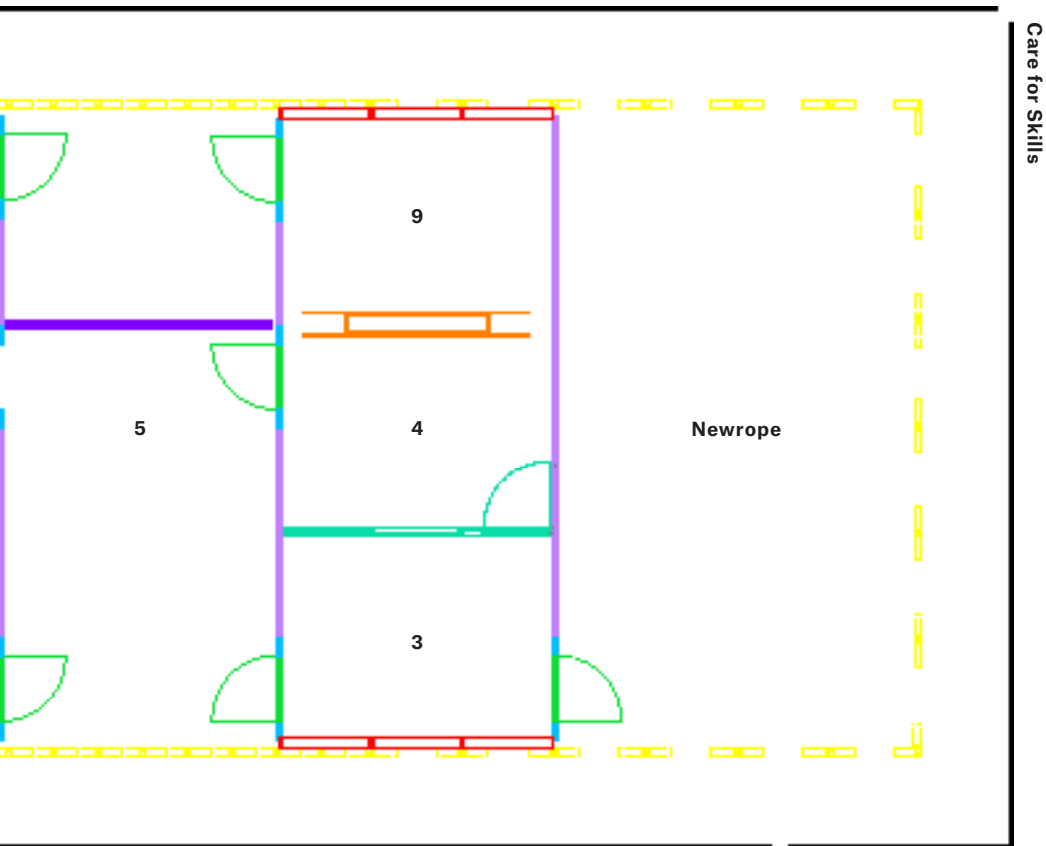
Interdependence: 1 Huis Perrekes, 2 Sporthaven and Ziggy, 3 House for Seasonal Neighbours

Maintenance: 4 Actiris, 5 Z33, 6 Le Rideau

Post-humanism: 7 Grand Hôpital de Charleroi, 8 Ecotron, 9 Negenoord Observation Tower

Map

Care for Repair



Care for Public Space

Huis Perrekes

Huis Perrekes is a care home for people of all ages with dementia. The existing villa in the village of Oosterlo was refurbished and two volumes were added for sleeping and gathering. The caring approach in the architecture of Huis Perrekes manifests itself in various ways, but always subtly. The house has a large kitchen where inhabitants can cook together and cradle beds where residents can rest when they need to be comforted. It also features tactile ornaments, artworks and lighting fixtures chosen for their well-being.

The design aims to ensure that people with dementia live a dignified life and are free to act independently. A large sliding door connects the old villa and the new volume, making a gentle but clear distinction between the sleeping and living areas. At night, this door is closed, becoming the end wall of the corridor. This architectural element protects the residents from distraction at night without creating a sense of obstruction. The private garden provides another example of soft boundaries. Shared with the village, it encourages interdependent relations between the inhabitants of Huis Perrekes and the villagers. The garden also hosts a new pavilion that is frequently activated with cultural activities such as concerts, talks, festivals and artistic interventions.

At Huis Perrekes, caring is practised through sharing on various levels, thanks to the vision of the whole team and its director. Sharing food among inhabitants; sharing the garden and music with villagers. A shared feeling of touch, silence and cradling.

Design: NU architectuuraatelier

Design team: Armand Eeckels, Halewijn Lievens, Marie Bemelmans, Frek Dendooven

Collaborations: Infrabo, Modest, Plant en Houtgoed, Monument Goedleven

Client: Huis Perrekes vzw, director Carla Molenberghs

Project director: Studio Ester Goris

Design: 2016

Delivered: 2017

Lamps: Huis Perrekes, De Rode Draad geleid led by Annelies Van Bellingen

Video: *Cradle* by Ingel Vaikla

Photography: Stijn Bollaert





Design: import.export Architecture

Design team: Oscar Rommens, An Vanderveken, Tim Van Verdegem, Diede Ramakers, Renée Faveere, Maria Ionescu, Joris Van Reusel

Collaborations: Macobo (Sporthaven), Antea Group (Ziggy), De Peuter NV (contractor for Sporthaven and Ziggy), Schelfhout Beton

Client: Stad Mortsel, Autonoom Gemeentebedrijf AGB Mortsel patrimonium en vrije tijd Sport Vlaanderen

Design: 2017 (Sporthaven), 2019 (Ziggy)

Delivered: 2021 (Sporthaven), under construction (Ziggy)

Photography: import.export Architecture, Tim Van Verdegem, Kamer 808 (Sporthaven), Marie Dreezen (landscape)

Sporthaven and Ziggy

Sporthaven and Ziggy are two unexpected neighbours sharing the same terrain in an uncanny landscape in Mortsel. Former and present farms, ex-military compounds, railway, airport, groundwater ecosystem, bats, football fields, paddle cages, wild Canadian geese, bike paths and a settled permanent caravan park are only some of the features of this landscape. Sporthaven hosts three football clubs in one volume while functioning as a tribune for the fields around the building. Football clubs VC Mortsel OG, VK Helderhoek and Cantincrode share the space with their changing rooms on the ground floor and canteens on the first floor, at two edges of the building. A dance hall in-between the canteens introduces a different type of user to the mix. The building generates a contrast between its robust ground floor, designed to be durable and resistant to the tremendous energy of its young players and a delicate first floor with its cross-laminated timber structure.

The back-door neighbour of Sporthaven is the caravan park Ziggy. As one of the oldest nomadic settlements in Belgium, Ziggy is currently undergoing a transformation. According to the needs and desires of the community, the caravans' positions on the site will be reconfigured and new sanitary units will be built. Not only is how they live together as a community being explored but also how they interact with the wider terrain and its new users in Sporthaven.

Interdependence occurs on many scales, among football clubs, among Ziggy caravan dwellers, among the water and the football fields, among the lighting of the fields and the flight routes of bats, roamers, farmers, etc. All these actors on the terrain were taken into consideration during the design process. The equal treatment of all actors plays a big role in generating a caring environment as a space of exchange and dialogue.

House for Seasonal Neighbours

As its name declares, House for Seasonal Neighbours aims to provide space for seasonal workers in Belgium. Depending on the agricultural calendar, people from across Europe travel to Belgium to help with the harvest. They become temporary inhabitants of industrial farms and rural villages. Mostly invisible to permanent inhabitants, they transform the spaces and spatial practices of the contemporary rural environment. House for Seasonal Neighbours is a landmark that aims to make visible these dynamics while at the same time offering a place in which to gather.

Set up next to the parking lot of the Aldi supermarket in Borgloon during the summer of 2018, House for Seasonal Neighbours is a simple structure made of corrugated steel sheets. With references to the housing typology of the typical workmen's row houses as well as to industrial container units, the design becomes a public interface where people meet. In the course of its use, House for Seasonal Neighbours held film screenings, talks and after-work gatherings just by providing shelter, a fridge, a coffee machine and white plastic chairs.

The project welcomes the seasonal workers by providing a space of exchange. True to the nature of seasonality, the temporary structure cares for the people sharing the farms and rural towns with a simple design that is genuine to its location.

Design: Seasonal Neighbours Collective

Design team: Ciel Grommen & Maximiliaan Royakkers

Collaborations: Dieter Leyssen (reflection), Vlad Ionescu & Karolina Michalik (translation), vzw Heisa! and Jeugdhuis 't Biejke (events)

Client: N/A

Design: 2018

Delivered: July 2018

Photography: Olmo Peeters





Actiris

Located near Bourse (the Stock Exchange), in the heart of Brussels, the Actiris office is a transformation project. The space was made available for temporary use between the departure of Actiris from the building and the start of the renovation project. On the initiative of Architecture Workroom Brussels, a number of architecture and planning companies decided to share one of the floors. The design relies on making the best use of architectural elements found on site.

The conventional office separator walls and doors from the second half of the twentieth century were reconfigured to create a common use in the middle with offices around it. Reuse of the existing modular systems meant learning to bring together different technical details. The exhibition design you see here at Caring Architecture is based on the same logic.

To give the architectural elements of Actiris a third life, the intention was to reuse the modular wall, door and steel-frame systems for the exhibition you are visiting. After a lengthy email exchange with Entrakt, the temporary use management company, only a few walls could be salvaged but the general layout of the scenography as well as the scales and dimensions are based on the existing materials of Actiris. To follow the same idea, here in the scenography you can see a mix of various construction systems and technical details of the steel frame profiles borrowed from Architecture Workroom Brussels, a few walls and doors recuperated from Actiris, stage design elements and reused pieces from former exhibitions, and circularity-based modular walls of Beddeleem. The small number of new materials added to the exhibition have been thought of with their after-lives in mind. In this sense, maintenance and the care given to building materials exceed the lifespan of a single project.

Design: Laura Muyldermans & LDSRa

Design team: Laura Muyldermans, Sander Rutgers, Lauren Dierickx

Collaborations: Architecture Workroom Brussels

Client: Architecture Workroom Brussels

Design: 2019

Delivered: 2019

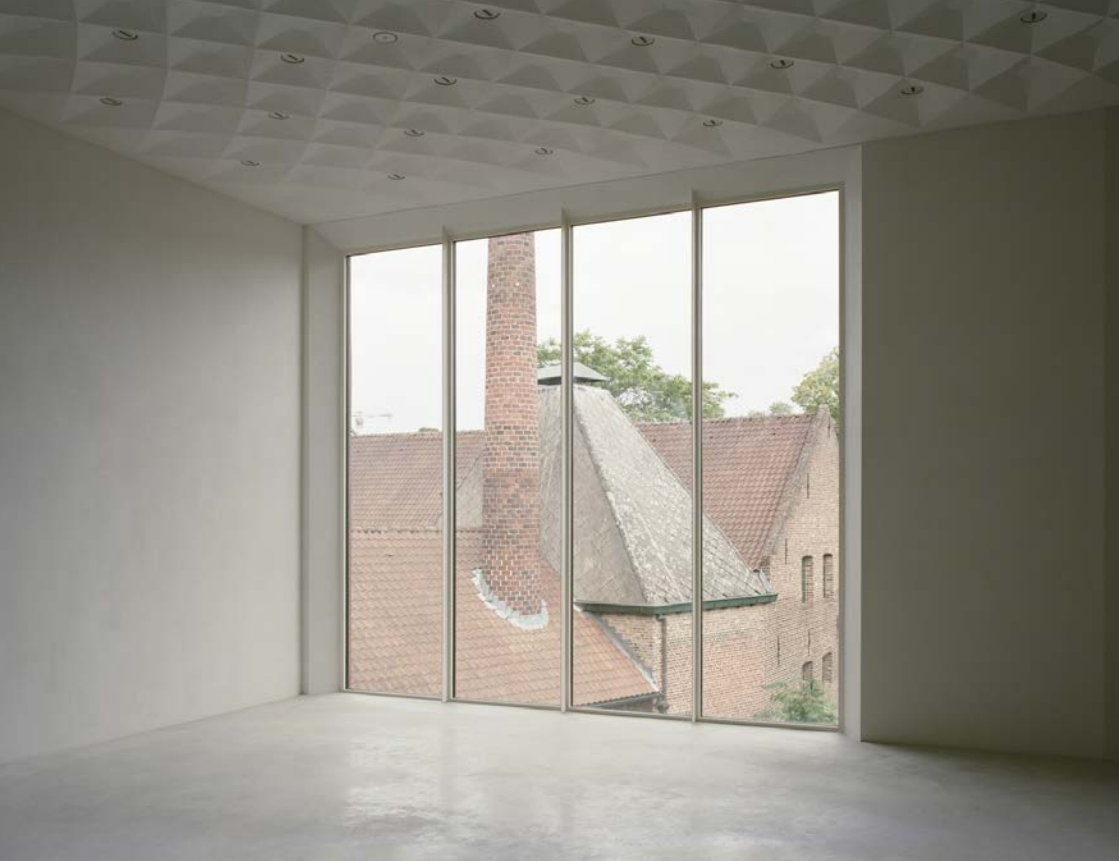
Photography: Michiel De Cleene

Z33

Z33 is a cultural institute in Hasselt focusing on art, design and architecture. The new wing continues the fabric of the beguinage built in phases over centuries while seamlessly connecting with the existing buildings. By closing off the courtyard of the beguinage with a solid wall towards the city and generous openings to the inner courtyard, the project maintains the living culture of the beguinage with a different materiality and design language.

The new wing works with the existing building of Z33, built in 1958. While this part was kept with due respect, the newly constructed wing also pays homage to the old design, especially with its railings, reminiscent of the design language of the 1950s. The texture of the façade is designed through material and pattern studies. They were conducted with craftsmen and manufacturers and were produced by hand. People involved in the project and their material and emotional labour signify the interdependent characteristics of architectural practice, how one building relies on various ideas, actions, energies and emotions. The texture of the wall is not only visible from the outside while approaching Z33 but is also present in the interiors. With its proportionally sized openings, the red wall reveals itself from time to time while roaming inside the building, reminding us of the context we are in and triggering our memory.

The caring in Z33 is manifested by maintaining the existing building and historic pattern of the beguinage with dignity. The new wing creates new relations not only among the new and existing buildings but also among the makers of the built environment, such as craftsmen, manufacturers, the client and architects.



Design: Francesca Torzo architetto

Design team: Francesca Torzo, Marco Guerra (senior collaborator), Antoine Lebot, Liaohui Guo, Pablo Brenas, Anna Opitz, Riccardo Amarri, Lorenzo Gatta, Előd Zoltan Golicza, Cyril Kamber, Besart Krasniqi, Jovan Minic, Andrea Nardi, Anna Oliva, Costanza Passuello, Alessandro Pecci, Domenico Pedroli, Nicola Tornamenti, Gion Balthasar von Albertini

Collaborations: THV Houben Belemco (contractor), Kristof Mutert and Michiel Wielockx (constructor and building site leaders), ABT België (structural engineering and local administration), Gianfranco Bronzini (stability adviser), Gattoni Piazza (electrical and mechanical engineering), Ben Boving (expo light adviser), Petersen Tegl, Bekaert, Knauf, Reynaers

Client: Z33 & Province of Limburg

Design: 2011–19

Delivered: 2020

Photography: Gion Balthasar von Albertini

BIENVENUE
A LA
MAISON



Le Rideau

Le Rideau is a theatre company in the Brussels municipality of Ixelles. Five existing buildings were renovated and organized around a courtyard. The largest volume of the former coal storage accommodates the theatre hall while the neighbouring former houses provide spaces for the café and ticket desk as well as offices and dressing rooms. Various methods were implemented for maintenance: sustaining the urban fabric, renovating the existing volumes and reusing theatre equipment and building materials.

On the street, Le Rideau does not assert its presence. It is identified by subtle elements such as a lighting fixture and a green mesh billboard featuring changing texts. Besides maintaining the existing buildings, the idea was to also preserve the urban life and habits. The theatre company at the same time performs a situated practice where they are constantly exchanging with the neighbourhood. The five buildings are connected around the courtyard on the ground floor and with a clear circulation on the above floors. The sizes of the rooms and the façades of the existing buildings were not altered, each of them keeping their former characteristics. From the seats in the theatre hall to mirrors in the dressing rooms and from technical equipment to curtains, Le Rideau features a lot of reused materials, thanks to the network of its technical director.

With its accurate interventions towards the urban texture, existing buildings and materials, Le Rideau caringly seeks to maintain and enrich life in and around the building.

Design: OUEST

Design team: Jan Haerens, Stéphane Damsin, Carlo Frassinelli

Collaborations: JZH & Partners (stability), Artscéno (scenography), Aveolis (HVAC + energy saving), Kahle Acoustics (acoustics), Dear Reader (signage), T&P Renovation (general contractor)

Client: Le Rideau

Design: 2014

Delivered: 2019

Photography: Johnny Umans, Alice Piemme

Video: Sepideh Farvardin

Grand Hôpital de Charleroi

The Grand Hôpital de Charleroi is located on a former slag heap. The artificial mound, formed by the mining activities, was reconfigured to make way for the hospital building and a large park around it. The centre of the site was levelled flat by moving the soil to the borders of the plot, creating a new topography as a site of cohabitation by people, animals and plants. During the construction works, special attention was given to the local species living on site, in particular to the natterjack toad.

The landscape design manifests a post-humanist approach by caring for the toads and the existing endemic plants during the terraforming process. The considerate movement of the soil and the newly created ponds allowed for the toads to continue living on the site while the endemic species were taken as the main point of departure for the introduction of new plants.

The landscape design comprises three main areas: the platform, patios and park. The platform around the hospital creates a transitional space in-between the park and the building, organizing all the functional spaces of the hospital such as the entrances, visitor parking and emergency access. The patios bring vegetation into the core of the building while the park is an invitation to take a walk away from the hospital. The topography creates new views on the park and the surrounding city.

This new topography was designed to provide space for all living organisms. Ponds were created for the animals while many new trees were planted to create a forest. Paths wind through the hills and around the ponds, offering a caring environment for the patients, their visitors and the hospital workforce.

Landscape Design : Bureau Bas Smets

Architectural Design : VK Architects & Engineers & Reservoir A

Client: Grand Hôpital de Charleroi

Surface: 15 ha

Design: 2013–19

Construction: 2018–24

Drone photography: Potvos

Photography: Marie-Noëlle Dailly, Bureau Bas Smets





Design: noAarchitecten

Design team: An Fonteyne, Jitse van den Berg, Philippe Viérin, Martijn Hendrickx

Collaborations: Studieburo Mouton (structure), RCR (mechanical, electrical and plumbing + HVAC), HVA (experiment design and build)

Client: Hasselt University

Design: 2013

Delivered: 2016

Videos: Potvos

Ecotron

Ecotron is a building designed to conduct advanced research on the effects of future climate. The building is composed of twelve 'ecotrons', gas-tight chambers, each providing a controlled environment for experiments with a transparent dome to catch the sunlight and completely isolated from the earth's atmosphere. These chambers are aligned from east to west in a 100 m long building. Equal shadow conditions for each ecotron are ensured by extra domes at the far ends. Large soil samples from the surrounding Hoge Kempen Natural Park were cut and placed in lysimeters in these chambers and exposed to a variety of highly controlled and precisely manipulated climate conditions. A continuous, highly precise data stream of various parameters (about 1.3 million data points per day) indicate the changes in the ecosystems over time.

The building has a stainless-steel façade. While the matt panels facing south are a reference to the neighbouring former mining and industrial structures, the highly polished stainless-steel mirrors on the remaining façades face the surrounding natural park, multiplying the views of nature, thus hiding the building in plain sight in nature until it reveals itself as a 'cutting edge' high-tech instrument for research.

This installation explores the interaction of the reflective Ecotron with its environment and the contrast in its interior with the white laboratories, completely isolated from the outside world. The soundtrack of the installation is a "sonification" of the data stream generated by the sensors measuring minute changes in the ecosystem in the lysimeters. Subtle shifts in the data become audible.

How we can all live together on this planet and how we define the 'we' in this question become crucial in discussions on the impact of climate change. The development of a building as a means of understanding the hidden workings of nature is a step towards developing a post-humanist approach. In this way, care for the planet is realized through architectural practice.

Negenoord Observation Tower

The observation tower is an earthen structure overlooking the semi-natural, semi-artificial landscape of the Maas river valley in Limburg. A former gravel quarry, the terrain is now a natural reserve that is becoming a home for various species. It also functions as a flood plain. Since the tower needed to adapt to the possibility of flooding, the structure was built on top of an artificial mound. In the event the entire area floods, the lowest floor level is still above water level and becomes an important refuge for the wild horses and cattle in the area.

The correct mix for the rammed earth was defined by the conditions of available local materials from the Maas area: gravel, clay and earth. The surface area of these walls will slowly erode, so the gravel will become more visible in time. As part of the attempt to transform an extractive terrain into a natural reserve, the structure plays a role by inviting people to perceive and appreciate the Maas valley around them. The framed views of the landscape along the staircase define the path to the top of the observation tower and wash the rammed earth walls with light. By carefully adding new materials to the reserve, the tower aims to amend what it takes from nature while at the same time ensuring a long lifespan with durable solutions.

The Negenoord Observation Tower cares for the planet by aiming to generate awareness of the environment. Through the use of natural elements, the tower's layered volume demonstrates past exploitations of the earth. It also contributes to the ecosystem by caring for animals during floods and providing them with shade in the open landscape. By not following an extractive method for construction, the tower embeds itself in the landscape it sits upon.

Design: De Gouden Liniaal Architecten

Design team: Jan Thys, Kristof Benaets, Raf Snoekx

Collaborations: Util Strukturstudies (structural engineering)

Earth consultancy: Craterre, Vessière & Cie, BC Studies

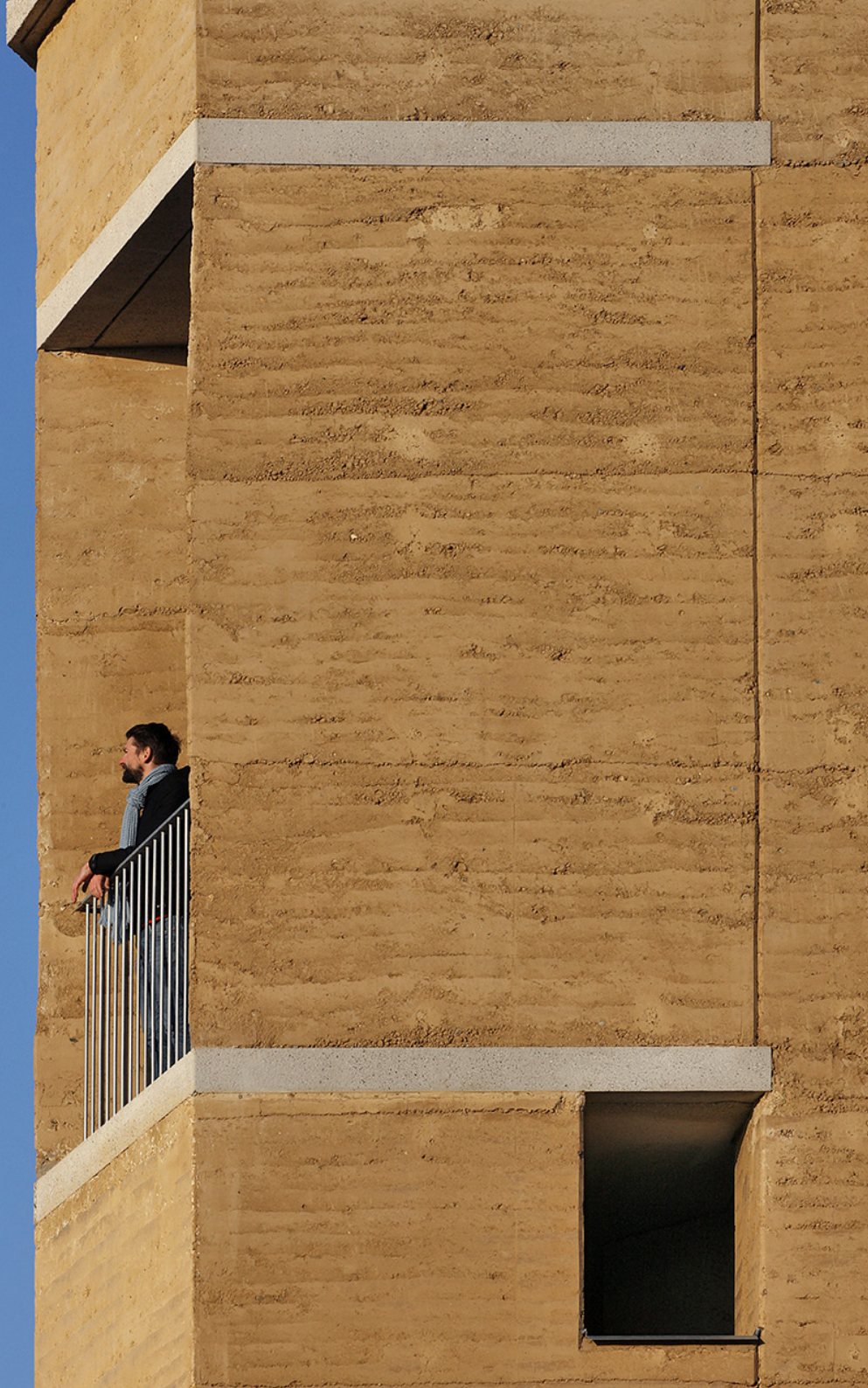
Client: Restructuring committee

Design: 2012

Delivered: 2016

Model: BC Architects and Studies

Photography: BC Architects (construction photos), Filip Dujardin



Introduction

For the space of reflection at the back of the exhibition hall and the discursive programme, the VAI is collaborating with the Newrope Chair of Architecture & Urban Transformation. As an interdisciplinary research group that is part of the architecture department of ETH Zurich, Newrope is interested in hearing what care means to you in your daily (personal and professional) life and what role you see for design(ers) in caring for the world around us. You are invited to take a break, sit at a table and enjoy a coffee. Maybe you will come up with an idea you want to share with others. We hope you do. You can use the postcards on the table and/or your writing and drawing tools, then put your contribution in the mailbox. The contributions will then be placed under the glass on the table, opening up the discussion with different perspectives for future visitors. They will also feed the discursive programme in the sense that they help formulate critical questions for the architects involved in the projects on display, during both the excursions and the dialogues. The postcards function as a reality check: they propose a multitude of interpretations of care, exploring the ways in which care has been expressed (or not) in this exhibition.

The space of reflection is the outcome of a collective effort. Newrope's participation concept and proposal for a desk and postcards to share ideas, along with chairs from the House for Seasonal Neighbours project, the scenographers' idea of placing a coffee machine and the VAI team's suggestions for mediation all come together in this space.

The discursive programme comprises three excursions to the projects in the Care for Space for Care, each time followed by a dialogue between the architects, excursionists and Newrope. The aim is to experience first-hand what is framed as caring architecture in the scope of this exhibition and to critically engage with both the projects and the exhibition itself. The possible outcomes of the discursive programme are also showcased in the space of reflection in the exhibition hall as an added layer to knowledge-sharing.

Calendar

Excursion 11.06.2022

11h Visit Sporthaven & Huis Perrekes

Dialogue 17h De Singel

Excursion 20.08.2022

10h30 Visit Negenoord Observation Tower, Ecotron, Z33

Dialogue 17h Hasselt (TBA)

Excursion 03.09.2022

11h Visit Le Rideau, Charleroi GH

Dialogue 17h Brussels (TBA)

Critical Care. Architecture for a Broken Planet

A planet in crisis. The earth in intensive care. Man-made environmental and social catastrophes are threatening to render the planet uninhabitable. The situation is critical and, dominated by the interests of capital, architecture and urbanism are caught up in the crisis. But there's another way. The exhibition shows how architecture and urbanism can contribute to repairing the future and keeping the planet and its inhabitants alive.

'Critical Care' is an appeal for a new approach, for a caring architecture and urbanism. 21 current examples from Asia, Africa, Europe, the Caribbean, the USA and Latin America prove that architecture and urban development do not have to be subservient to the exploitation of resources and labor. The relationships between economy, ecology and work are redefined in each of these projects. There are many players in this care: activists, lawyers, anthropologists, artists, but also city councils and companies, working together with architects and planners. This requires new alliances between top-down and bottom-up.

Caring is always concrete, whether in the city or in the country. The specific local conditions are the starting point, including earthquake-proof and sustainable village development in China, flood protection in Pakistan and Bangladesh, the conversion of modernist buildings in Brazil and Europe, an ecological community land trust in Puerto Rico, the revitalization of historical irrigation systems in Spain, new concepts for public spaces and mixed use of city districts in Vienna, London and Nairobi. The exhibition title 'Critical Care' refers to the fact that Planet Earth is in intensive care. Acute and long-term care is necessary. Architecture and urbanism contribute to reviving the planet. The repair of the future has begun.

Critical Care: Architecture for a Broken Planet is an exhibition by Architekturzentrum Wien, curated by Angelika Fitz and Elke Krasny.

Recovery of the Irrigation System at the Thermal Orchards

CÍCLICA and CAVAA, two architectural collectives from Barcelona, together with the local allotment association, have reactivated the disused Roman irrigation system in Caldes de Montbui, Spain, and made the garden plots accessible to the public.

Cares about clean water; water as a public good; public space; civic society; heritage; food selfsufficiency.

Cares for recovery of a traditional irrigation system; turning private gardens into public space; participatory action research; co-designing with gardeners; micro-interventions; organic farming.

Agents of Care municipal public space board; gardeners association; public space and sustainability department of the local government; architects; engineers; public university researchers.

Design: Recovery of the Irrigation System at the Thermal Orchards

Design team: Caldes de Montbui, Spain

Location: CÍCLICA [space-community-ecology] sccl.

and CAVAA

Date: 2015



Caño Martín Peña Community Land Trust

ENLACE in San Juan, Puerto Rico, has transformed the land in the immediate vicinity of the Financial District, where the informal settlements are located, into a community land trust and has supported the ecological repair of the Martín Peña Canal in a process of more than 700 consultations over several years.

Cares about land rights; ecology; poverty alleviation; fighting gentrification; equitable development; resiliency; environmental justice; social and economic justice.

Cares for community land trust; participatory planning; safer housing; disaster resiliency; ecological restoration; flood prevention; adequate infrastructure; stormwater and wastewater drainage systems; potable water distribution systems; public health.

Agents of Care community organizations; government corporation; community leaders; a team of lawyers; social workers; urban planners; anthropologists; together with more than 100 alliances with the private and public sectors and over 400 volunteers.



Design: Caño Martín Peña
Community Land Trust

Design team: Corporación del
Proyecto ENLACE del Caño Martín
Peña and G-8 Grupo de las Ocho
Comunidades Aledañas al Caño
Martín Peña, Inc.

Location: San Juan, Puerto Rico

Date: 2014

Friendship Centre

URBANA, the architectural practice of Kashef Mahboob Chowdhury, has renounced costly filling as flood protection at the Friendship Center in Gaibandha, Bangladesh, and works with the water, not against it.

Cares about climate; context; safety; education; horizontal learning; health; community; cultural heritage; high-quality design; disaster management; infrastructure development; good governance.

Cares for water management; simplicity; local materials; low cost; spatial luxury; local typologies; nature; natural ventilation.

Agents of Care architects; NGO for healthcare, education, and sustainable development; NGO staff and trainees.

Design: Friendship Centre
Design team: Kashef Mahboob
Chowdhury/URBANA
Location: Gaibandha, Bangladesh
Date: 2012



Unidad de Vida Articulada Orfelinato, Uva de La Imaginación

Colectivo 720 transformed huge modernist water storage facilities in Medellín, Colombia, into a safe new public space for disadvantaged neighbourhoods.

Cares about reuse of public infrastructure; public space; environment; climate; safety; education; community; integrating architecture, landscape and urban design; high social and cultural impact.

Cares for inclusive public space; public comfort zones; thermal comfort; natural light; earthquake resistance; eco-materials.

Agents of Care architects; Empresas Públicas de Medellín.



Design: Unidad de Vida Articulada
Orfelinato, Uva de La Imaginación

Design team: Colectivo 720

Location: Medellín, Colombia

Date: 2015

MEXUS

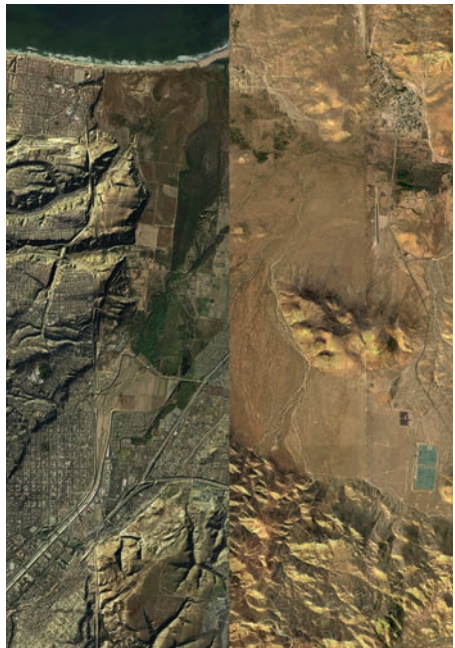
Estudio Teddy Cruz + Fonna Forman are developing cross-border ecological concepts and new ideas of border citizenship for the border area between the USA and Mexico.

Cares about social and economic equality; migration policies; climate change; urban informality; community agency; public thinking; the economic, ecological and social impact of the militarized US-Mexico border; border ethics; human rights.

Cares for ecology; watersheds; climate justice; informal economies; cross-border citizenship; civic learning; community agency; cultural and economic production at the neighborhood scale; research collaborations with grassroots organizations beyond academia.

Agents of Care architects; political scientists; UCSD University of California, San Diego; grassroots organizations; government, universities, neighborhoods and communities along the US-Mexico border.

Design: MEXUS
Design team: Estudio Teddy Cruz +
Fonna Forman
Location: US-Mexico Border
Date: 2018



Transformation of 530 Dwellings, Cité du Grand Parc

Lacaton & Vassal with Frédéric Druot and Christophe Hutin renovated a large-scale modernist residential building, consistently featuring its qualities and adding spacious conservatories and balconies.

Cares about changing the standard; the legacy of large-scale modernist housing; housing quality; space maximization; sustainability; resources; economy.

Cares for the principle of generosity and economy; serving life; use and appropriation; comfort; pleasure; use of existing resources; building performance.

Agents of Care architects; Les Offices de l'Habitat (public housing office).



Design: Transformation of 530 Dwellings, Cité du Grand Parc
Design team: Lacaton & Vassal, Frédéric Druot and Christophe Hutin
Location: Bordeaux, France
Date: 2016

Haus der Statistik

ZUsammenKUNFT, a broad alliance from civil society together with the city administration and architects at Berlin's Alexanderplatz is transforming the former Haus der Statistik from the GDR period into a public welfare-oriented urban quarter with affordable housing, culture, education and the "Town Hall of Tomorrow".

Cares about the common good; right to housing; culture; education; social affairs; integration of living and working; living together; municipal democracy; post-war modernism; public space; economic stability; local identity.

Cares for co-production; cooperation of administration and civil society initiatives; reuse/conversion/further construction; solidary economies; integrated district development; neighborly alliances; cooperative organization; participation.

Agents of Care social and cultural institutions and associations; artists' collectives; architects; cooperatives; district administration; city council; real estate companies; housing associations.

Design: Haus der Statistik
Design team: ZUsammenKUNFT
Location: Berlin, Germany
Date: since 2015



SESC 24 de Maio

Paulo Mendes da Rocha + MMBB Arquitetos converted a modernist department store building in São Paulo into a social cultural, sports and health centre that offers naturally ventilated public spaces, with a swimming pool on the roof.

Cares about cultural buildings; public and institutional design; public space; high quality design; architectural and cultural heritage; critical practice in architecture; inclusive and common space; redistribution; health; neighborhood; hospitality.

Cares for reuse; public space making; interior public space; adaptive reuse; civic culture.

Agents of Care architects; large non-profit welfare provider.



Design: SESC 24 de Maio

Design team: Paulo Mendes da Rocha + MMBB Arquitetos

Location: São Paulo, Brazil

Date: 2017

PC Caritas

Architects de vylder vinck taillieu have created a generous public space for patients, visitors, plants and animals from the ruins of a hospital pavilion in Melle.

Cares about health; continuity; co-habitation of humans and non-humans; history; repairing the future; bodies; environment; public space.

Cares for traces; materials; human scale; modest intervention; reuse; new healthcare concepts; hybrid spaces; nature.

Agents of Care architects; healthcare organization; researchers; gardeners; patients; visitors; plants and animals of the park.

Design: PC Caritas
Design team: architecten de vylder
vinck taillieu
Location: Melle, Belgium
Date: 2016



Sindh Flood Rehabilitation

Architect Yasmeen Lari and her Heritage Foundation are training “barefoot entrepreneurs” to build flood-resistant homes and infrastructure using traditional adobe/mud and bamboo construction techniques. Over 40,000 safe, cost-effective and extremely low-carbon buildings have been constructed since 2012.

Cares about disaster-resistant living; self-responsibility; heritage; soft skills; low carbon footprint; changing international donor rationale; dignity; social justice; gender.

Cares for horizontal learning; self-building; traditional building techniques; local materials; improving vernacular construction; collective shelters; low-cost housing; local economy.

Agents of Care architects; artisans; village people; “barefoot building entrepreneurs”; village entrepreneurs; women; local government; NGOs.



Design: Sindh Flood Rehabilitation

Design team: Yasmeen Lari/
Heritage Foundation of Pakistan

Location: Sindh Region, Pakistan

Date: since 2010

100 Classrooms for Refugee Children

EAHR, Emergency Architecture & Human Rights works with local residents and refugees near the Za'atari refugee camp in Jordan to activate traditional construction methods for building schools.

Cares about human rights; vulnerabilized communities; education; ecology; labor; post-war reconstruction; traditional construction methods; eco-materials; resilience.

Cares for community-building; civic learning; building skills; low-cost, eco-friendly and energy-efficient buildings.

Agents of Care architects; engineers; social scientists; NGOs; local municipality; local communities; builders; refugees.

Design: 100 Classrooms for
Refugee Children
Design team: Emergency
Architecture & Human Rights (EAHR)
Location: Za'atari Village, Jordan
Date: 2016–2017



Volontariat Home for Homeless Children

Anupama Kundoo uses ancient Persian clay building techniques for her volunteer home for homeless children in Pondicherry, where the building itself becomes its own kiln and so a producer of sustainable building materials.

Cares about costs; resources; giving a home; community; ecology; housing for all; local economy.

Cares for experimental baked-insitu brick technique; house as a kiln; house as producer of building materials instead of consumer; reuse of urban waste.

Agents of Care architects; potters; NGOs; students; craftsmen.



Design: Volontariat Home for Homeless Children

Design team: Anupama Kundoo

Location: Pondicherry, India

Date: 2010

Jintai Village Reconstruction

Rural Urban Framework implemented a model project for sustainable village development in cooperation with the local government in Jintai, in the Chinese province of Sichuan, following severe earthquakes and landslides.

Cares about modern rural livelihood; socially and environmentally sustainable models for earthquake reconstruction; authentic places; community; land consumption; common good.

Cares for disaster-resistant housing; ecological cycles; local materials; planted roofs; environmental technologies; rainwater collection and clearing; collective animal rearing; density; natural ventilation; community spaces; workshops.

Agents of Care architects; local government; NGOs; research center; landscape designers; village community.



Design: Jintai Village
Reconstruction

Design team: Rural Urban
Framework (RUF)

Location: Sichuan Province, China

Date: 2017

Ruskin Square

For the planning of Ruskin Square muf architecture/art convinced the private developer of the London borough of Croydon to take public space as the point of departure in the new master plan.

Cares about the public realm; environmentally responsive design; public access; infrastructure as public amenity; importance of the arts; cultural heritage.

Cares for inclusive and open, publicly accessible (privately owned) space; flood prevention; multiplicity of use; natural materials; public art; rich plant life; playfulness; quality and strategic durable projects.

Agents of Care architects; artists; local users; private developer.



Design: Ruskin Square
Design team: muf architecture/art
Location: Croydon, England
Date: since 2010

Superblock Model

With the introduction of the Superblock model, the city administration in Barcelona is giving people back their street space, in connection with a 21 percent reduction in private traffic.

Cares about livable and healthy city; public spaces as a common asset; protecting neighborhoods from through traffic; reducing pollution and accidents; strengthening pedestrian rights and social cohesion; climate change; mobility; density; nature.

Cares for promoting new uses of street space; reducing car traffic; increasing greenery; permeable surfaces; prioritizing functional over physical changes; flexible changes; adaption of planning tools to the needs of local residents; participation.

Agents of Care city council; experts on planning, mobility, ecology, design; local residents and associations; district officials.

Design: Superblock Model
Design team: Ajuntament de Barcelona (Barcelona City Council)
Location: Barcelona, Spain
Date: since 2016



Freie Mitte Nordbahnhof

StudioVlayStreeruwitz developed a model for the urban development area at Vienna's Nordbahnhof railway station grounds that is based on what is there rather than a tabula rasa. The Freie Mitte with its urban wilderness is the continuation of natural, cultural and social resources.

Cares about saving resources; identity; cost saving; nature; history; atmospheric quality; density; free space; mixed city; diversity

Cares for starting with the given; reducing traffic infrastructure; reuse; investing in the already existing; wildlife preserve; diverse qualities of spaces; participation; cooperative economies

Agents of Care architects; landscape architects; neighbors; makers; cultural workers; researchers; housing corporations; railway company; municipal planning departments



Design: Freie Mitte Nordbahnhof

Design team:

StudioVlayStreeruwitz

Location: Vienna, Austria

Date: since 2012

Care + Repair

In 2017, the Care + Repair project curated by Angelika Fitz and Elke Krasny worked with six international architectural teams in tandem with local experts to repair the future for Freie Mitte. The resulting exhibition was the first cultural use of the Nordbahnhof, part of the three-year research project led by Vienna University of Technology, *Mischung: Nordbahnhof*.

Cares about ecological and social justice in urban development; human and non-human interdependence; local-transnational interconnectedness; affordable housing; art; culture; diverse economies; natural and material resources.

Cares for community building; shared public space; collective ecological and social care practices; horizontal learning; collaboration between neighbors, future residents, immigrants, asylum seekers and the public at large; community spaces; reuse of materials.

Agents of Care architects; artists; musicians; biologists; community workers; students; curators; immigrant communities; local residents; urban planners; refugees.

Design: Care+Repair
Curator team: Angelika Fitz; Elke Krasny
Location: Nordbahnhof, Vienna, Austria
Date: 2017 Care+Repair;
2017–2019 *Mischung*:
Nordbahnhof /Nordbahn-Halle



R-Urban

atelier d'architecture autogérée is working in French cities on the R-Urban Model, networks of eco-civilian bases that rely on closed local loops of consumption and production.

Cares about counteracting climate change; resilience; solidarity; cultural, environmental and socioeconomic justice; political resubjection; diverse economies .

Cares for bottom-up urbanism; cooperative land trust; citizen participation; pedagogy; collaborating with existing eco-networks; collective learning; closed ecological circuits; collective eco-practices; reduction of CO2 emissions; waste recycling; cleanup and reuse of graywater; transnational knowledge exchange and collaboration; closed ecological circuits.

Agents of Care architects; activists; citizens; municipality; EU financial instrument supporting environmental, nature conservation and climate action projects; international partners .



Design: R-Urban
Design team: atelier d'architecture autogérée (aaa)
Location: Colombes (2011-16), Bagneux, Gennevilliers (2017-ongoing), France
Date: 2011 - ongoing

Kibera Public Space Project

The Kounkuye Design Initiative is working with grassroots organisations to develop productive public spaces in Kibera, Nairobi, combining environmental concerns, sanitation, local alternative economies and security.

Cares about spatial, social, economic and ecological equity; sustainable community development; economic self-sufficiency; community participation; public space; infrastructure; small-scale entrepreneurialism; resilience planning; reducing the risk of disaster; flood resilience.

Cares for productive public space; green infrastructure; clean water; sanitation; co-designing; self-sustained community economies; culture; education.

Agents of Care architects; designers; planners; engineers; community organizers; program specialists; operations staff; community activists; community entrepreneurs; local residents; educators; cultural producers.

Design: Kibera Public Space Project

Design team: Kounkuye Design Initiative

Location: Nairobi, Kenya

Date: since 2006



Didi Textiles

Architect Anna Heringer, together with fashion designer Veronika Lena and NGO Dipshika, has created the local textile production in the village of Rudrapur in Bangladesh, which reverses trade flows between the global South and the global North: old saris become design products.

Cares about labor conditions; rural areas; village life; local economy; local textile tradition; durability; consumer patterns.

Cares for decentralized production; crafts; income for women; horizontal learning; alternative “Made in Bangladesh”; rural-urban intervention.

Agents of Care architects; fashion designers; tailors; village women; fashion consumers.



Design: Didi Textiles
Design team: Anna Heringer
Location: Rudrapur, Bangladesh
Date: since 2012

Tofu Factory

Architect Xu Tiantian has designed a series of coherent interventions for the Songyang district of China to augment rural space, such as the tofu factory in Caizhai, which is a production site, a public space and a tourist attraction all at the same time.

Cares about strengthening rural life; creating livelihood; decentralization; green economy; food quality; tradition; identity; culture; small-scale tourism; landscape; community; public space.

Cares for local expertise; acupuncture; networks; local crafts and materials; cooperative economy; community facilities; pragmatic and adaptable solutions; low cost.

Agents of Care architects; local government and administration; villagers; family workshops; local craftspeople.

Design: Tofu Factory
Design team: Xu Tiantian/DnA_
Design and Architecture
Location: Caizhai Village,
Songyang, China
Date: 2018



Care for Space for Care: Scenes from Flanders and Brussels

Organisation and production:

Vlaams Architectuurinstituut, De Singel

Curators: Hülya Ertas, Sofie De Caigny

Scenography: Laura Muyldermans & LDSRa

Production lead: Nino Goyvaerts

Production De Singel: Karl Kana

Technical production: Guy Anthoni

Technical services and construction: Fabri3q

Video installation: Vertigo

Photoprint and installation: Milo Profi

Translation and editing:

Artemo Taaldiensten - Eva Van Walle (E-NL)

Patrick Lennon (E)

Press and communication: Egon Verleye

Director Flanders Architecture Institute:

Sofie De Caigny

Thanks to

All participating architects

Bureau Bas Smets

De Gouden Liniaal Architecten

Francesca Torzo architetto

import.export Architecture

Laura Muyldermans & LDSRa

noAarchitecten

NU architectuuratelier

QUEST

Seasonal Neighbours Collective

All loans

Architecture Workroom Brussels

Art & Exhibition Services

Hannelore van Balkom

Lorenzo De Brabandere

Isolde Casteleyn

Sepideh Farvadin

Casimir Franken

Bas van den Hout

Claudio Pantò

Potvos

Team Vlaams Architectuurinstituut

This project has been made possible with the support of

BEDDELEEM

The Flanders Architecture Institute is subsidised by the Flemish Government



Flanders
State of the Art

The program of the Flanders Architecture Institute is made possible with the support of



Reynaers
Aluminium

Ramen.
Deuren.
Glasgevels.



Gyproc
SAINT-GOBAIN

Bulo

STONE

Wienerberger

forster

Registered Publisher
Sofie De Caigny
Vlaams
Architectuurinstituut
J.V. Rijswijcklaan 155
2018 Antwerp

Design: Sara De Bondt

Critical Care. Architecture for a Broken Planet

An exhibition by the Architekturzentrum
Wien (25.04.–09.09.2019)

Director: Angelika Fitz

Executive Director: Karin Lux

On show at the Flanders Architecture
Institute, De Singel (28.05.–11.09.2022)

Curators: Angelika Fitz, Elke Krasny

Collaboration: Maitri Dore, Katharina Ritter

**Exhibition design printed version and
graphic design:** Alexander Ach Schuh

Original exhibition design:
the next ENTERprise

In-situ exhibition design:
Laura Muyldermans, LDSRa

Translations:
Brian Dorsey (D-E), Elke Krasny (D-E),
tradukas (E-D),
Eva Van Walle (E-NL)
Proofreading: Brian Dorsey (E)

Exhibition installation: Fabri3q, Milo Profi,
Vertigo

Public funding Az W:



= Bundesministerium
Kunst, Kultur,
öffentlicher Dienst und Sport

österreichisches kulturforum

Thanks to:

Bundesministerium für Verkehr, Innovation
und Technologie | Federal Ministry for
Transport, Innovation and Technology / Stadt
der Zukunft
GRÜNSTATTTGRAU
Wienerberger Österreich GmbH
Universität für Angewandte Kunst, Institut für
Architektur, Abteilung Energie Design |
University of Applied Arts Vienna, Institute
of Architecture, Energy Design (Bernhard
Sommer, Galo Moncayo)

Parts of the exhibition 2019 and the
accompanying programme are from the
three-year research and development project
Mischung: Nordbahnhof (lead TU Wien),
sponsored by Klima- und Energiefonds as part
of the Smart-Cities-Initiative

Introductory images: Planet: grafisches Büro

Illustration: Linus Baumschlager

Supported by:

Architecture Lounge Members:
Bundesimmobiliengesellschaft mbH, Building
Development Network Fleissner & Partner GmbH,
Buwog Group GmbH, Cetus Baudevelopment GmbH,
EGW Heimstätte Gesellschaft mbH,
Eternit Österreich GmbH, Fritsch, Chiari & Partner
Ziviltechniker GmbH, Geschäftsstelle Bau (WKÖ),
Gesiba Gemeinnützige Siedlungs- und BauAG,
Gewog – Neue Heimat, Grohe GmbH, Josko Fenster
und Türen GmbH, Kallco Development GmbH,
Kallinger Projekte GmbH, Mischek Bauträger
Service GmbH, Neues Leben Gemeinnützige
Bau-, Wohn- und Siedlungsgenossenschaft,
Österreichisches Siedlungswerk AG,
Österreichisches Volkswohnungswerk
Gemeinnützige GmbH, Sozialbau AG, Strabag AG,
Strabag Real Estate GmbH, Vasko+Partner
Ingenieure, Velux Österreich GmbH, Vitra GmbH,
WBV – GPA Wohnbau. für Privat an gestellte,
WKÖ – Fachverband Steine – Keramik, Wien 3420
Aspern Development AG, wohnfonds_wien,
WSE Wiener Standortentwicklung GmbH



Architekturzentrum Wien

